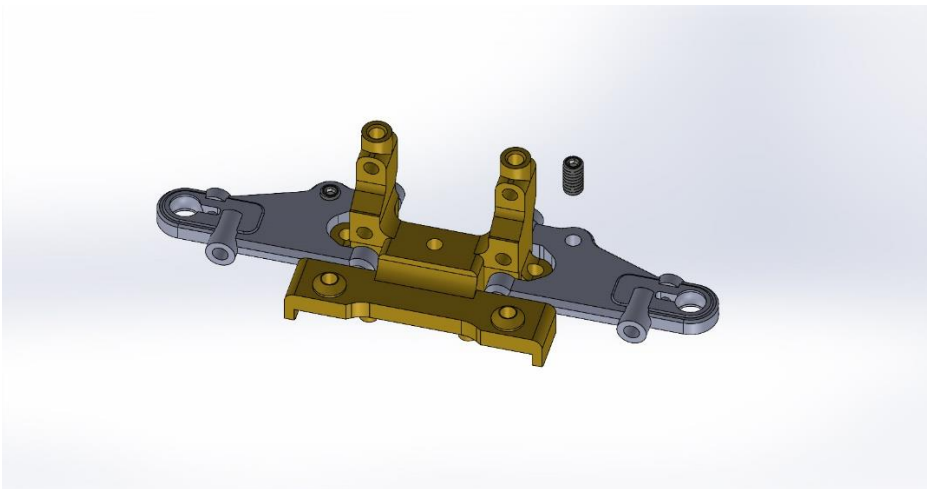
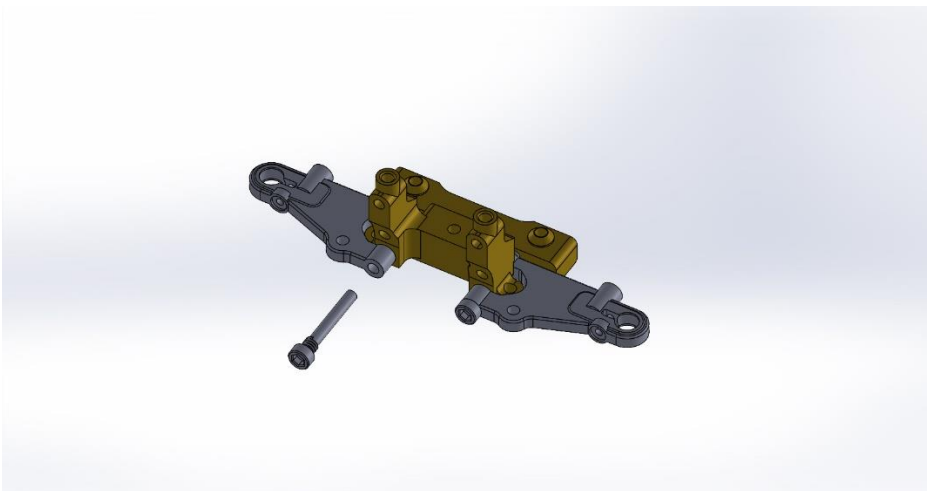
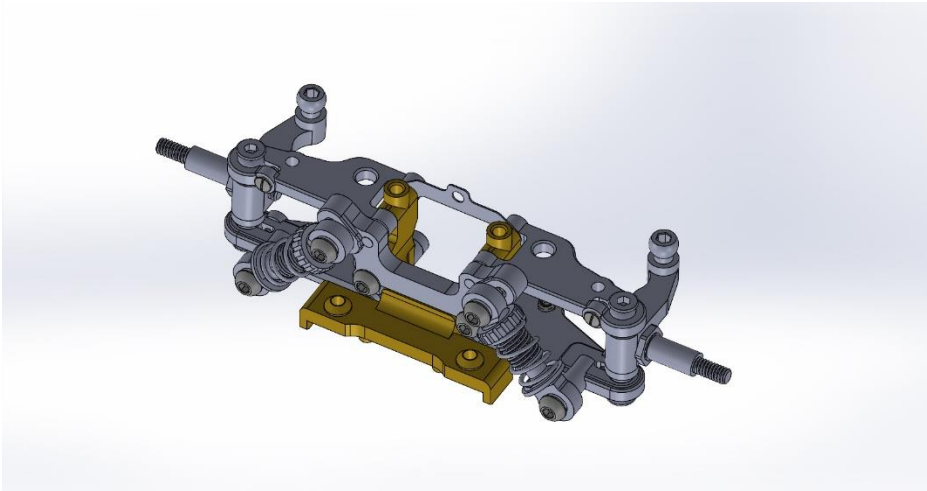


Reflex Racing RX28 Double A Arm

Assembly Guide



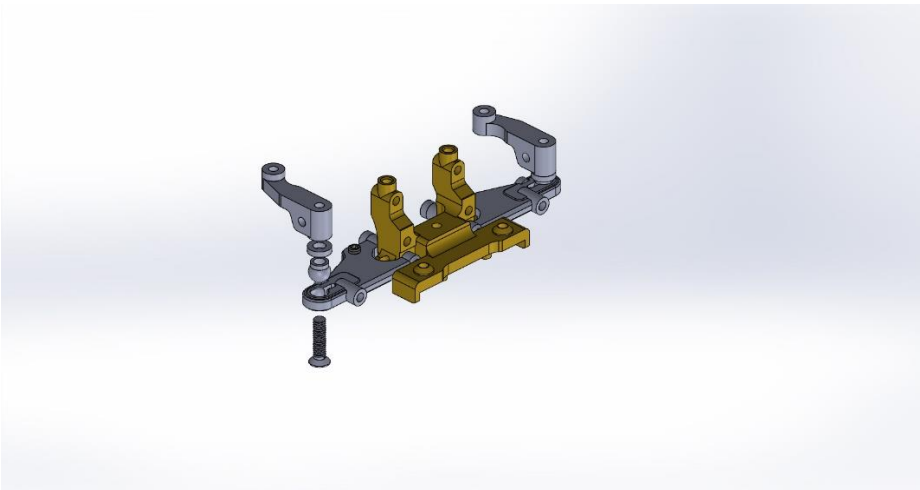
START

The following guide will help you assemble the Double A Arm front end for your RX28.

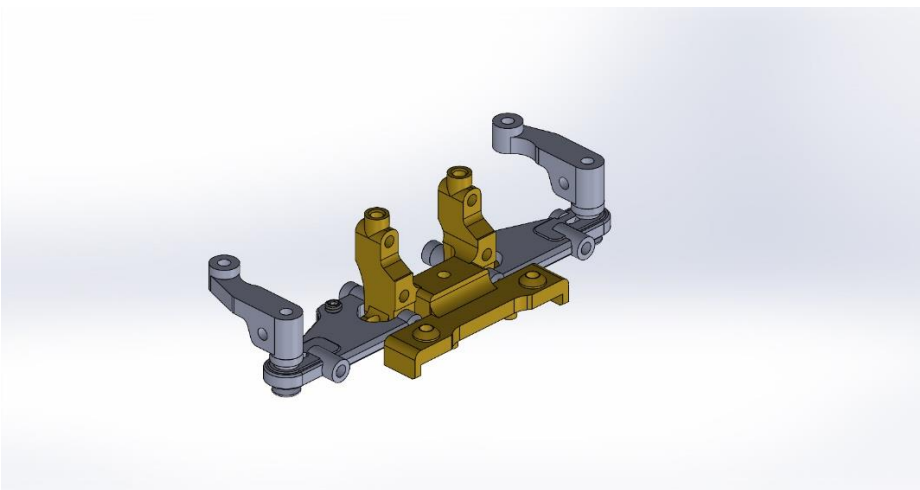
Start by installing the lower arms with the supplied lower arm hinge pins. Once installed the arms should be very free and fall by their own weight.

Install Two of the M2 x 4mm set screws on your lower arms. These are your droop adjustment screws.

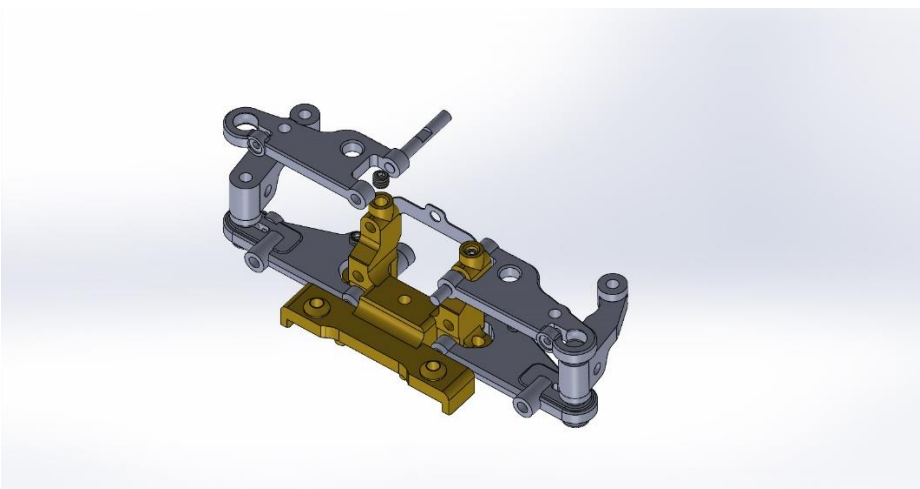
RX28 DOUBLE A ARM ASSEMBLY INSTRUCTIONS



Use the M2x8 CS screw through the bottom. Make sure the flange on the ball is facing the knuckle and use an M2x1 shim between pivot ball and knuckle. We recommend using Loctite on the screws. Tighten the screws until the vertical movement on the ball has been minimized and the ball still has free movement.



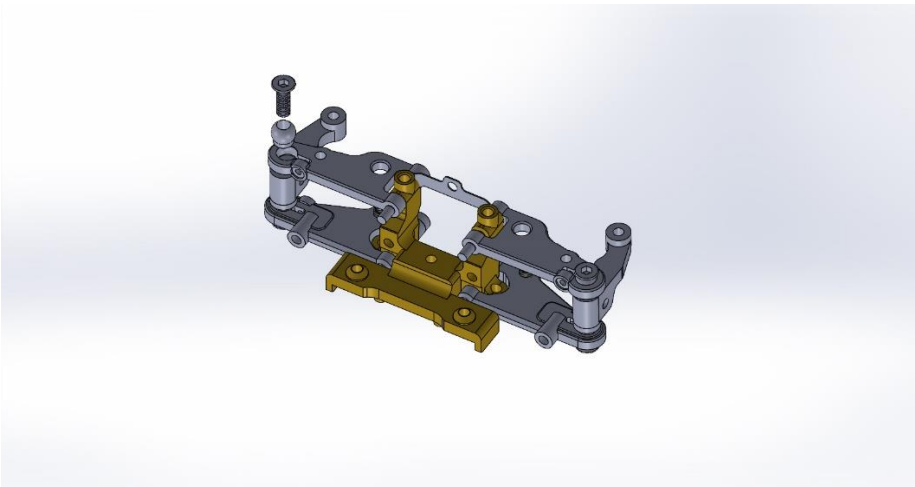
(Please Note: due to molding constraints the lower right side arm outer socket may need to be cleared a little bit to ensure more articulation.)



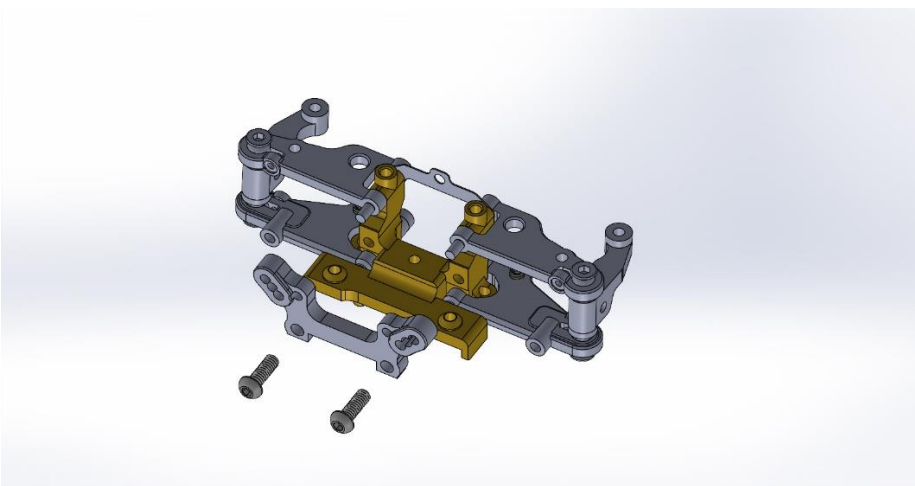
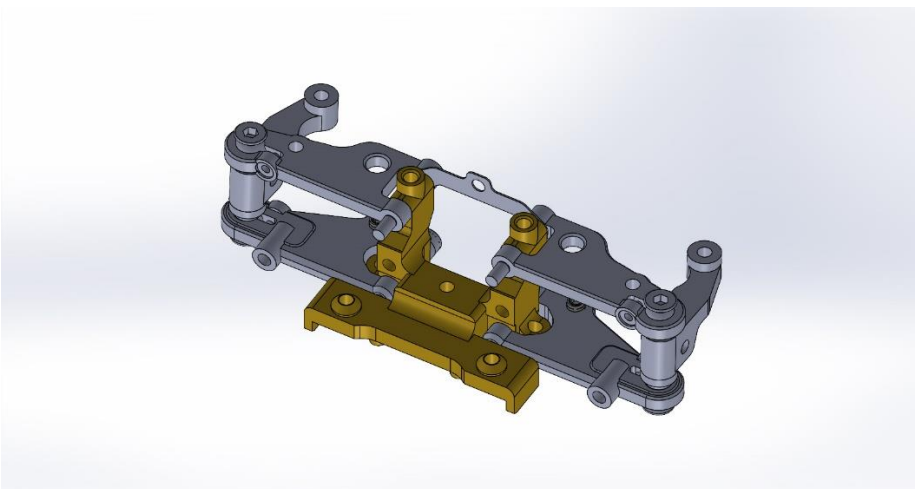
Next Install your upper arms. Hinge pin flat side should be facing the back and the top so that you can secure it with the provided M2x2 set screw.

If you use the thick 0.4 shim in the back, you have 4 degrees of caster. If you use two of the 0.2mm shims, and mount one on each side of the bulkhead you get 2 degrees of caster.

RX28 DOUBLE A ARM ASSEMBLY INSTRUCTIONS



To finish installation of the upper arms install the 3.6mm Delrin Pivot Ball on the upper arm and then secure with one of the provided M2x6 CS screws. Just like the lower arms, you must tighten the screw until the vertical play on the ball is minimized. Use Loctite to prevent the screws from becoming loose.



Now install your shock tower with two M2x6 BH Screws.

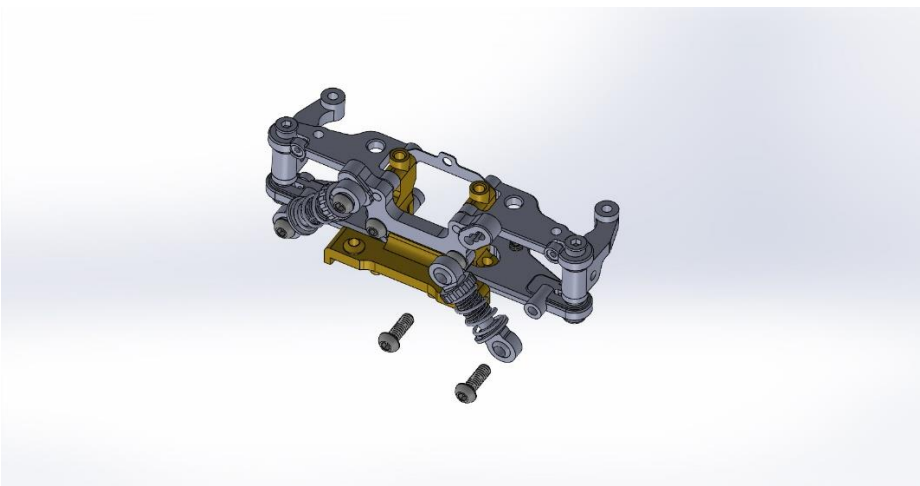
RX28 DOUBLE A ARM ASSEMBLY INSTRUCTIONS



For the next step, we are going to assemble the two front shocks. Use 2 more of the 3.6mm Delrin balls to install on the pivot sockets on each shock. Use 2 more of the 3.6mm Delrin balls to install on the pivot sockets on each shock. Thread the aluminum collar onto the shock body and grease the piston. To start, the recommended lube is Kyosho 30,000 gear grease (the blue stuff).

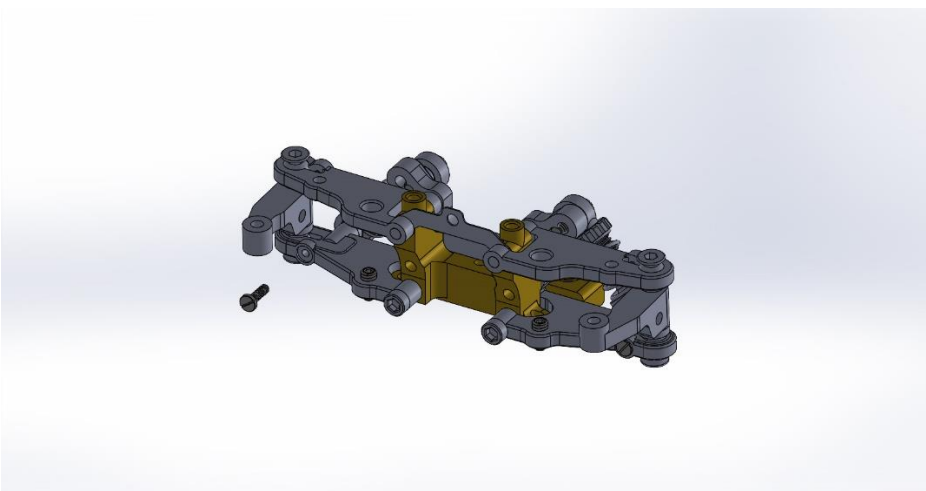
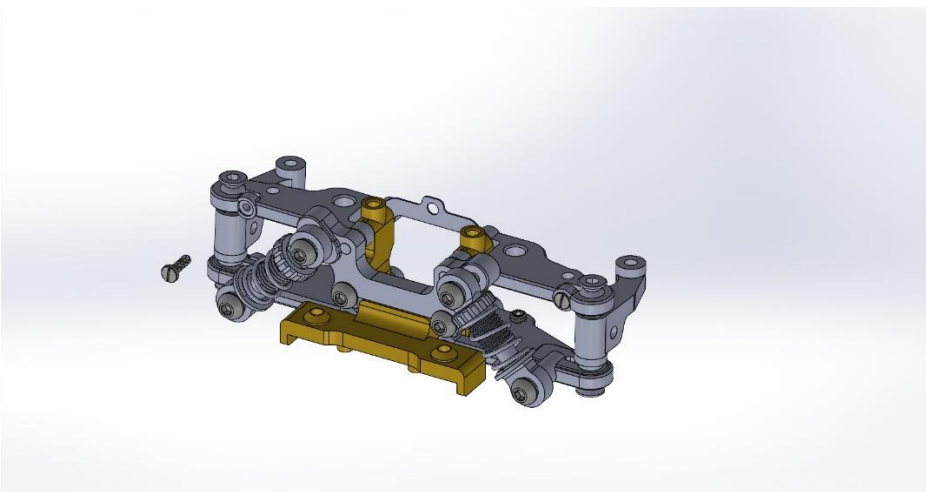
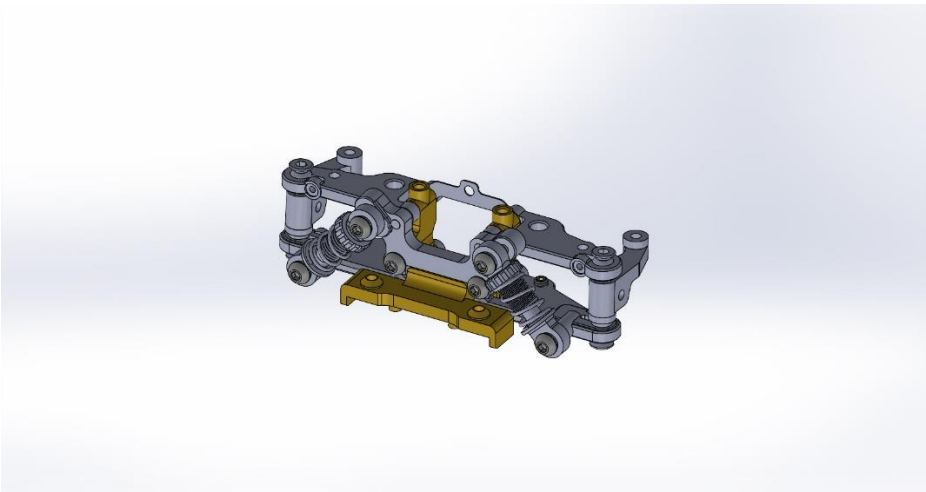


Once the damping grease has been worked in, pull apart the shock, install the spring and put the shock back together.



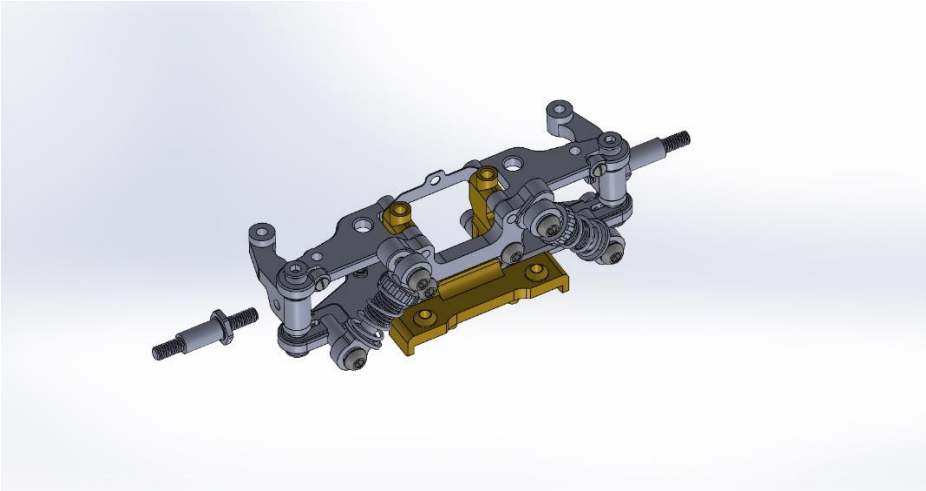
Install both shocks with the provided M2x6 BH screws.

RX28 DOUBLE A ARM ASSEMBLY INSTRUCTIONS

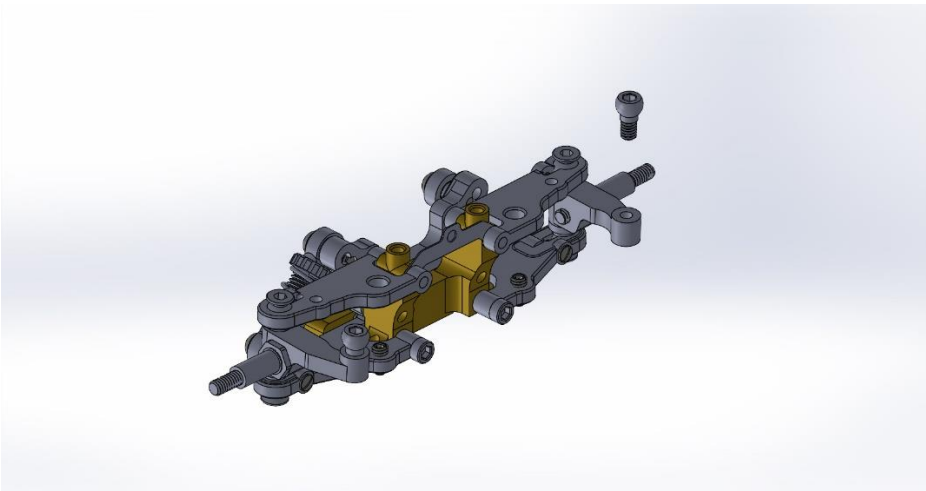


Once the shocks are installed, you can proceed to install the socket tightening screws on the arms.

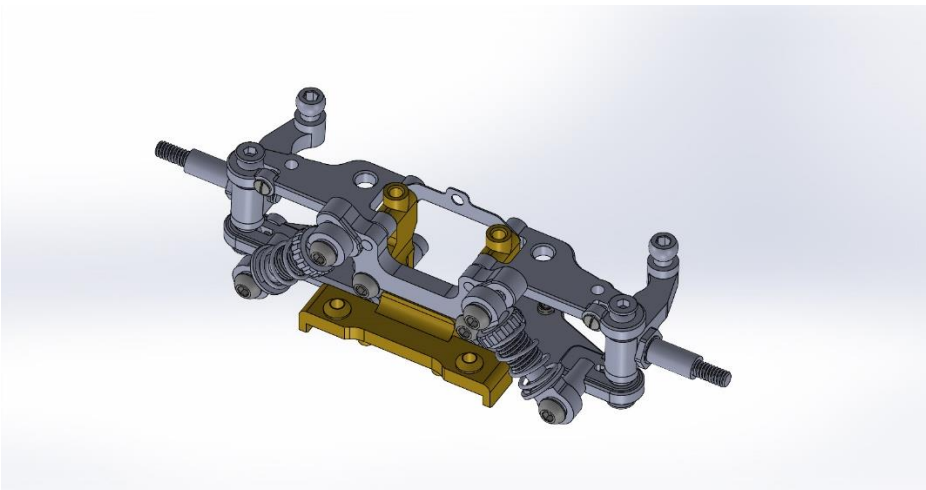
RX28 DOUBLE A ARM ASSEMBLY INSTRUCTIONS



Now install your front axles. It is best practice to once again, use some thread lock on the threads going into the knuckles.



To finish, now install the two 3.5mm ball studs on the steering knuckles.



Your front end is now ready to be installed on the main chassis of your RX28.