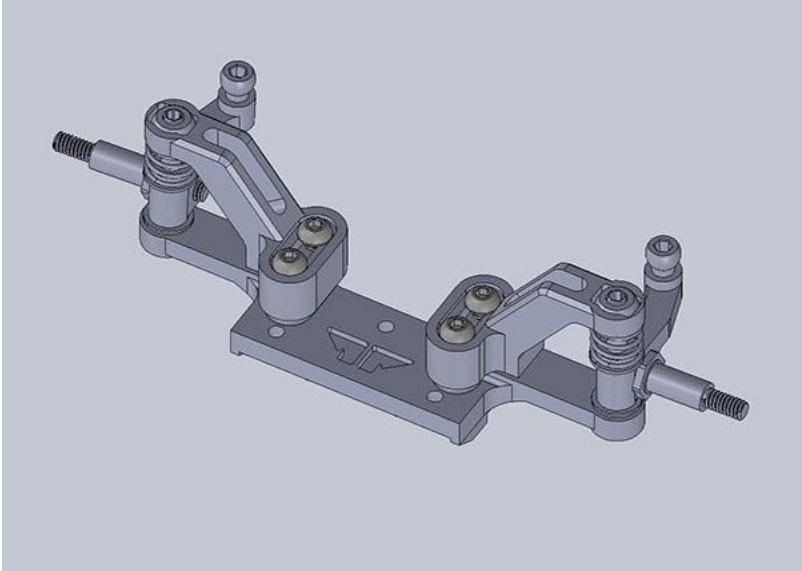


RX28 KISS Front End Assembly Manual

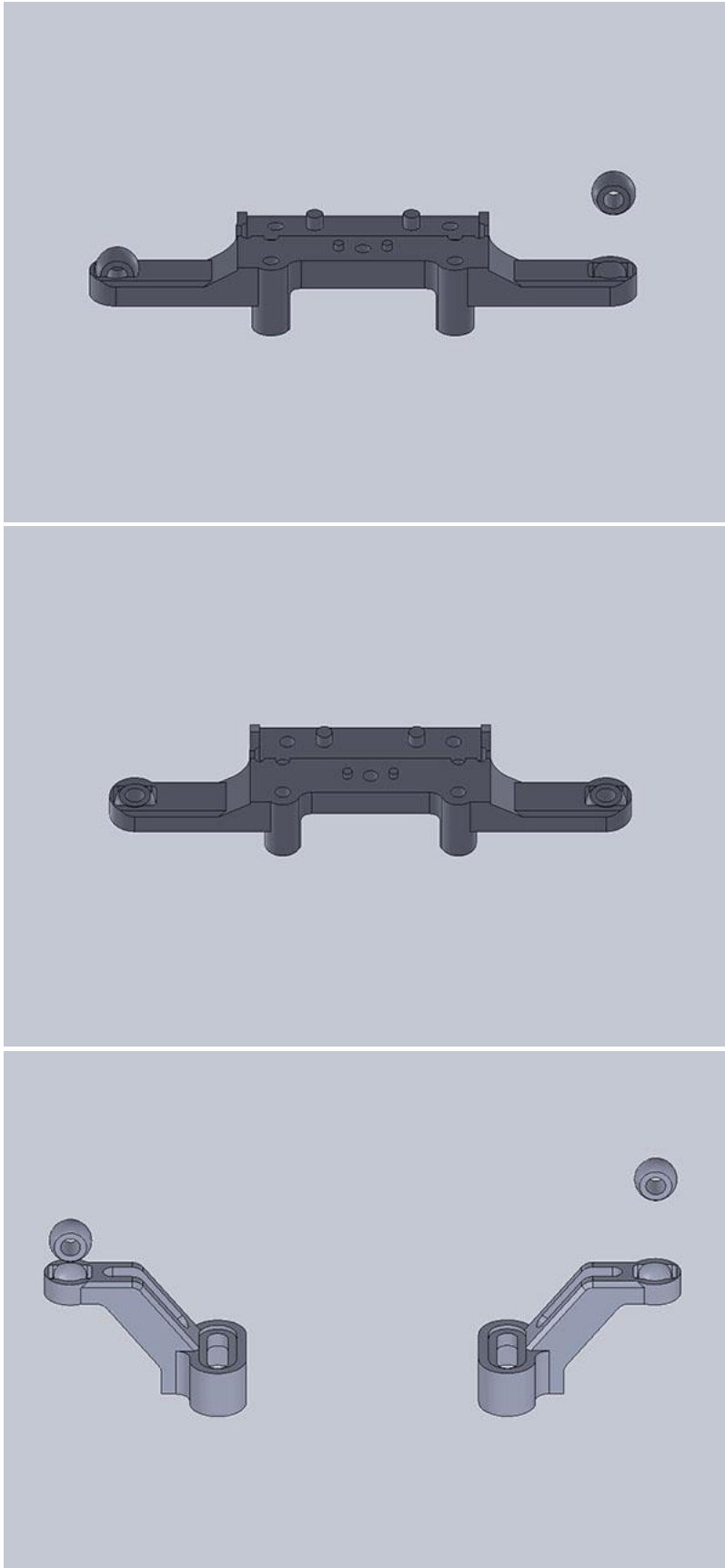
ASSEMBLY INSTRUCTIONS

Welcome to the KISS Front end
Assembly Manual.

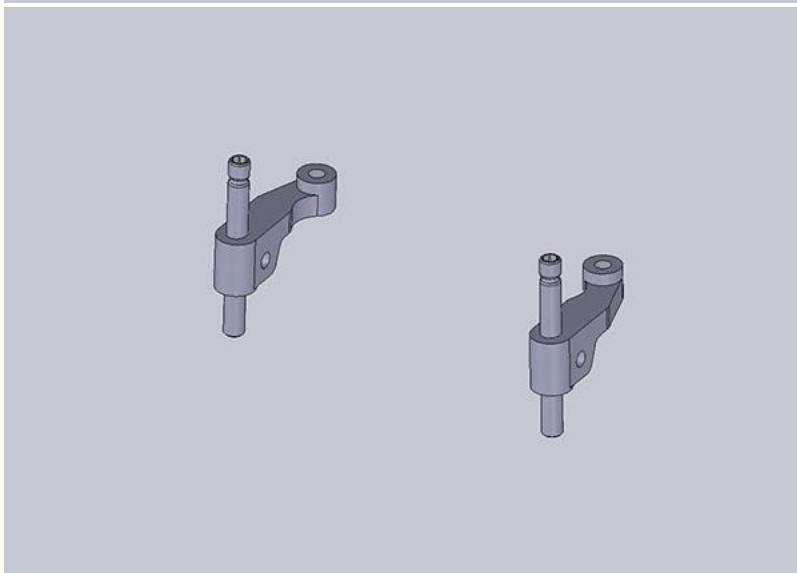
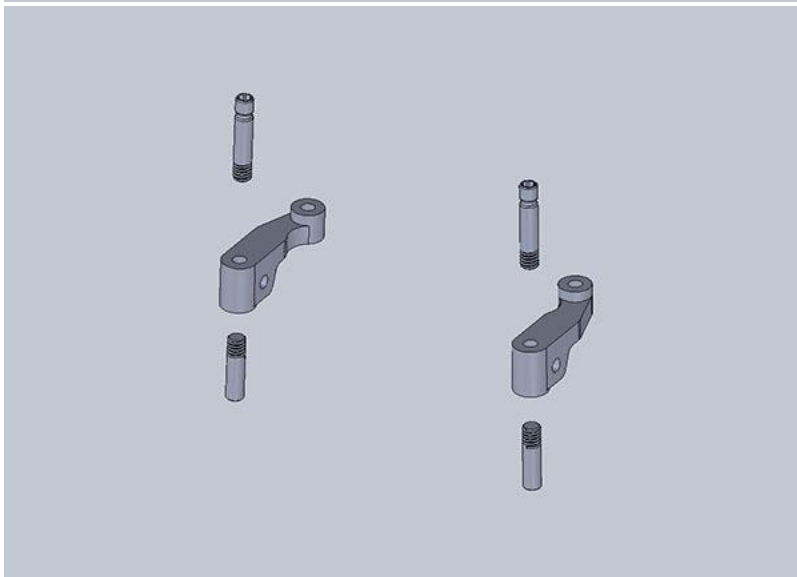
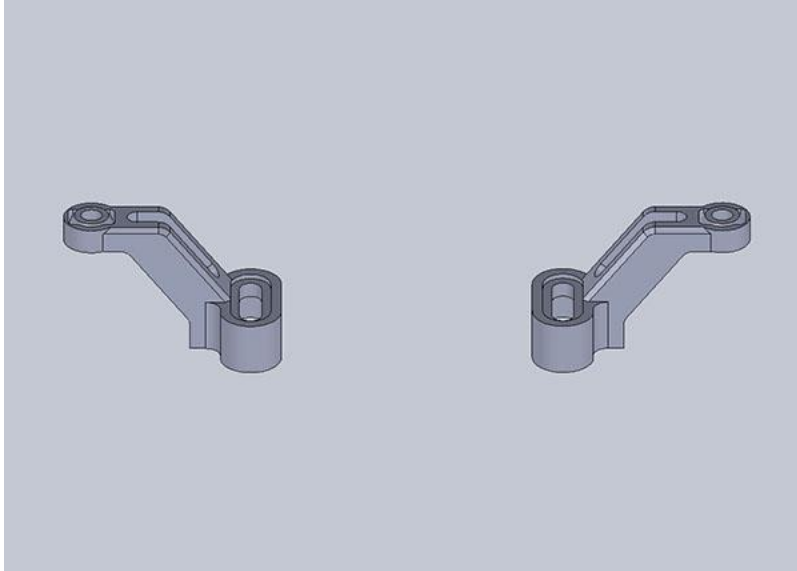


ASSEMBLY INSTRUCTIONS

Start by installing the KISS Pivot Balls on the Lower Bulkhead and Upper Arms. To do this, turn the balls 90 degrees in relation to the slot and push into the aluminum lower bulkhead and Upper arms. Once fully seated inside, they should be rotated to locate in place.



ASSEMBLY INSTRUCTIONS



After installing the balls, find the Knuckles and Suspension King Pins. Thread the long Kingpins at the top and the shorter ones in the bottom threads of the steering knuckles.

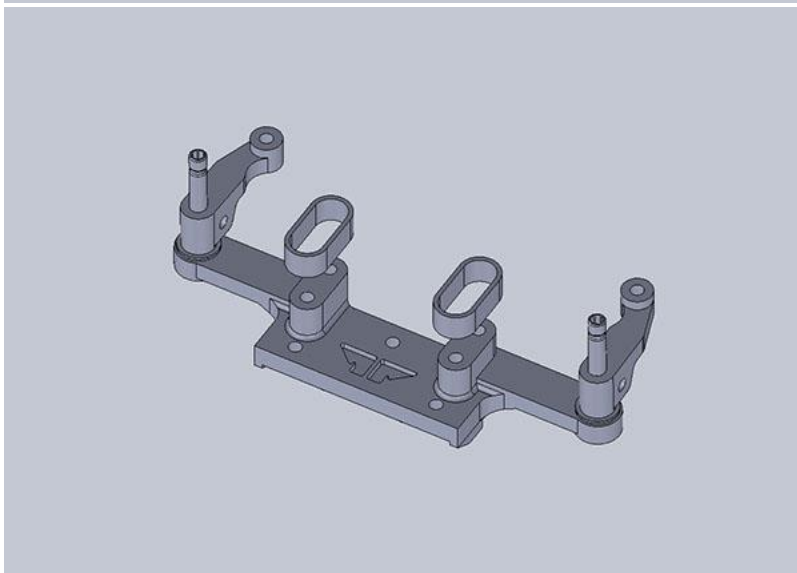
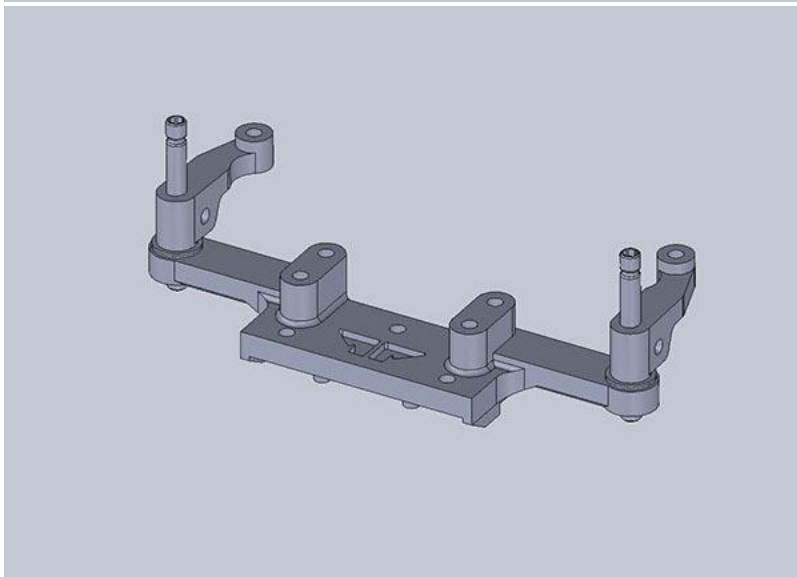
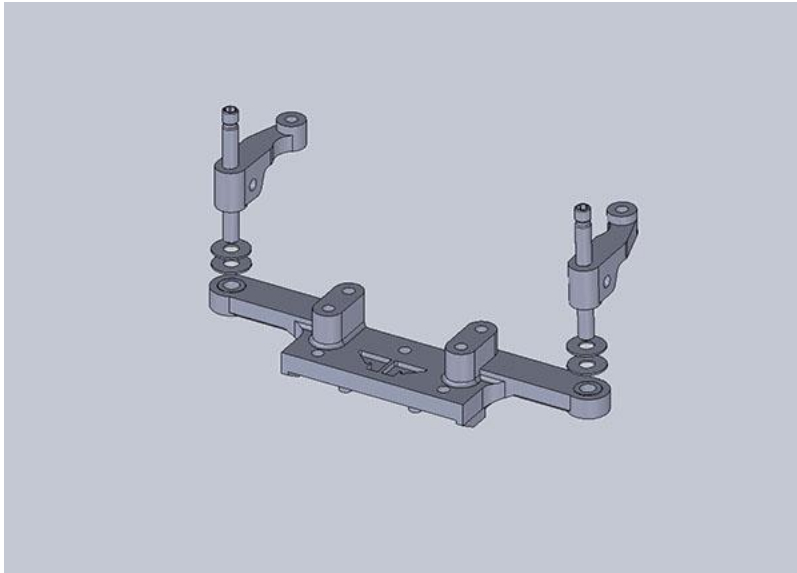
ASSEMBLY INSTRUCTIONS

Now install the knuckles through the lower bulkhead balls. Pay attention to these as they have a slight flange that should be facing the knuckles both top and bottom. Before sliding the knuckles in place, use 2x M2x0.3mm washers. These will set your pre-load and ride height.

Alternately, if you are using RX28A-18 Shims, you can install these shims on top of the knuckle instead and set your ride height with the shims under the bulkhead.

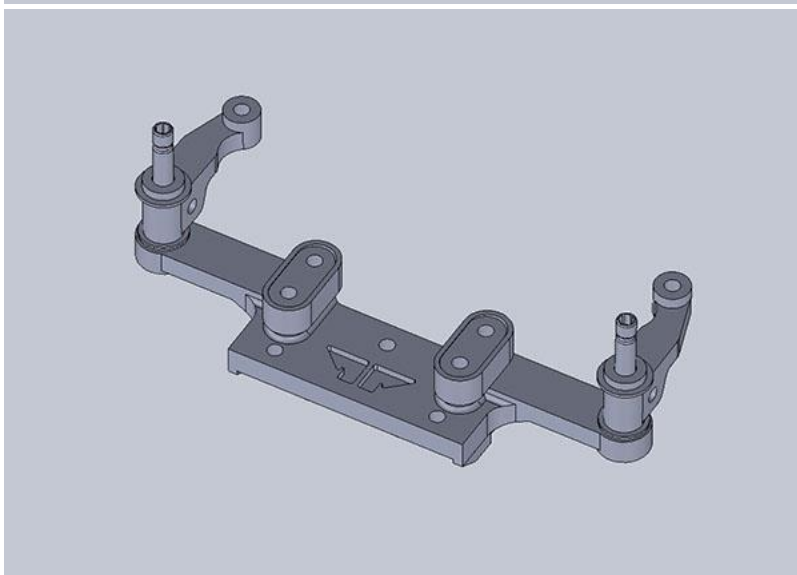
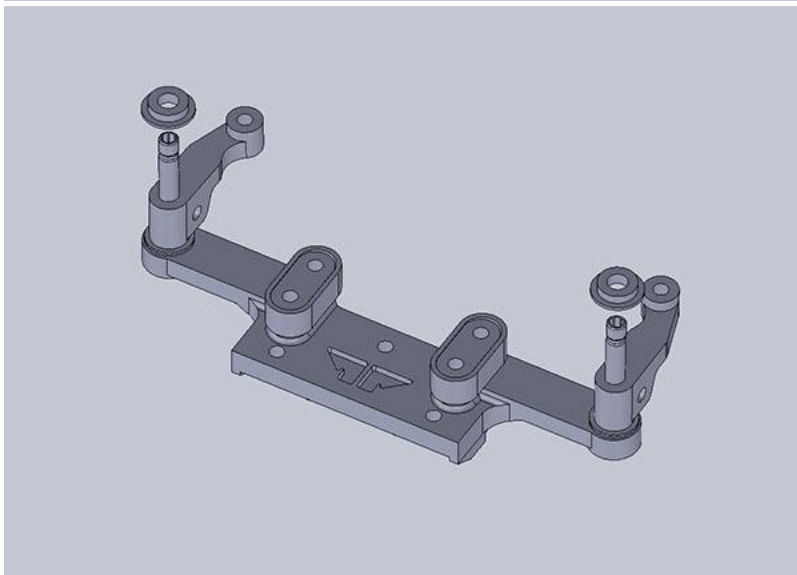
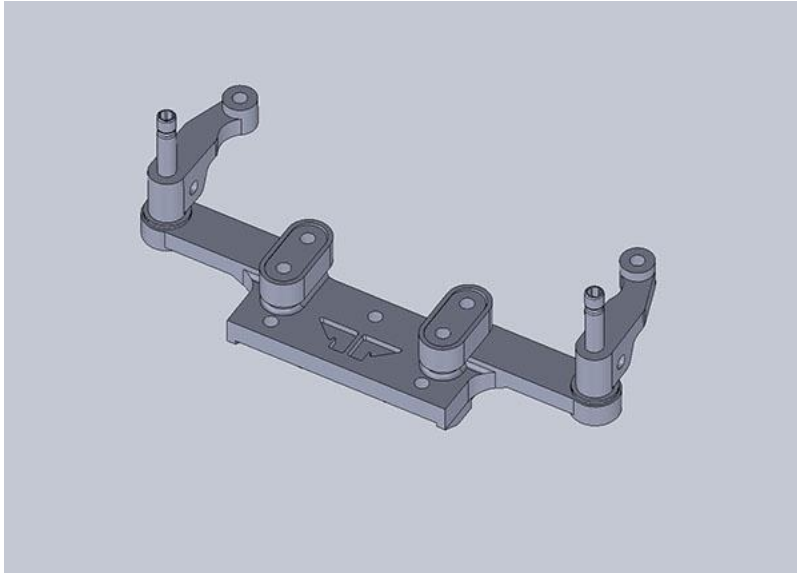
We suggest applying some 30,000 CST grease on at least the upper knuckles to provide some damping.

Next, install the camber inserts over the bulkhead. Kits come with the Centered Inserts; these provide approximately 1.5 degrees of camber.



ASSEMBLY INSTRUCTIONS

Now slide the Delrin spring
perches on top of the knuckle.



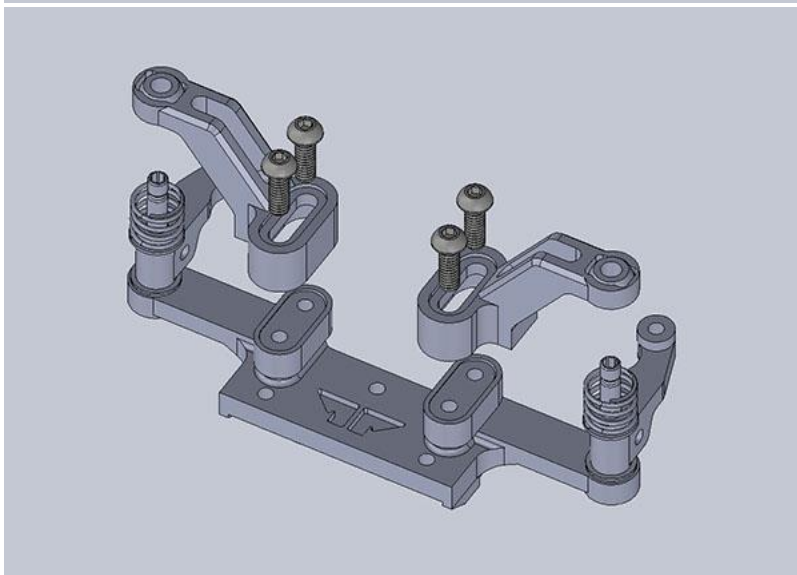
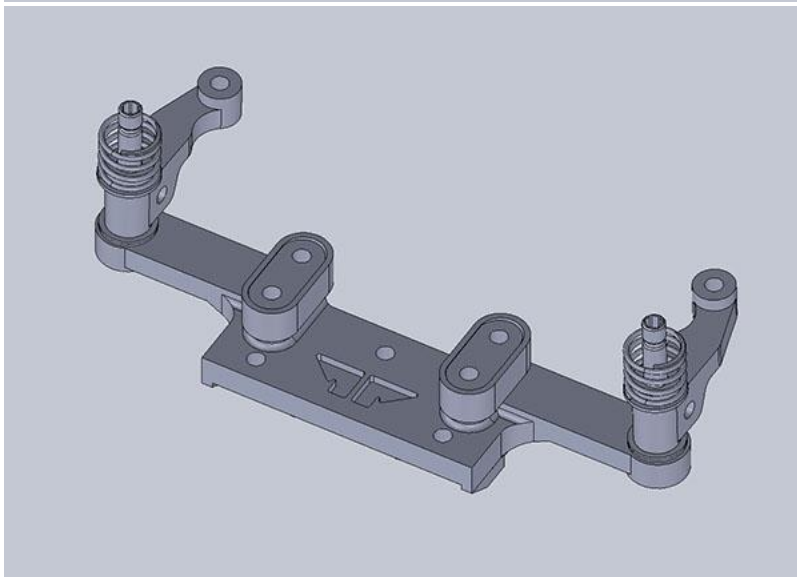
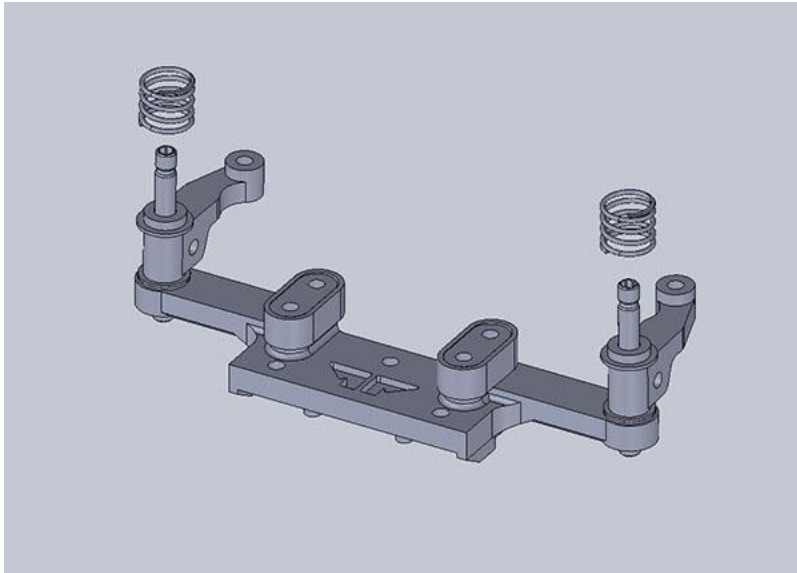
ASSEMBLY INSTRUCTIONS

Install your front springs on top of the perch and then, using 4x M2x6 BH Screws, attach both upper arms to the bulkhead.

The upper arms slide fore and aft. Towards the front you get approximately 2 degrees of caster, towards the back, you get approximately 4 degrees.

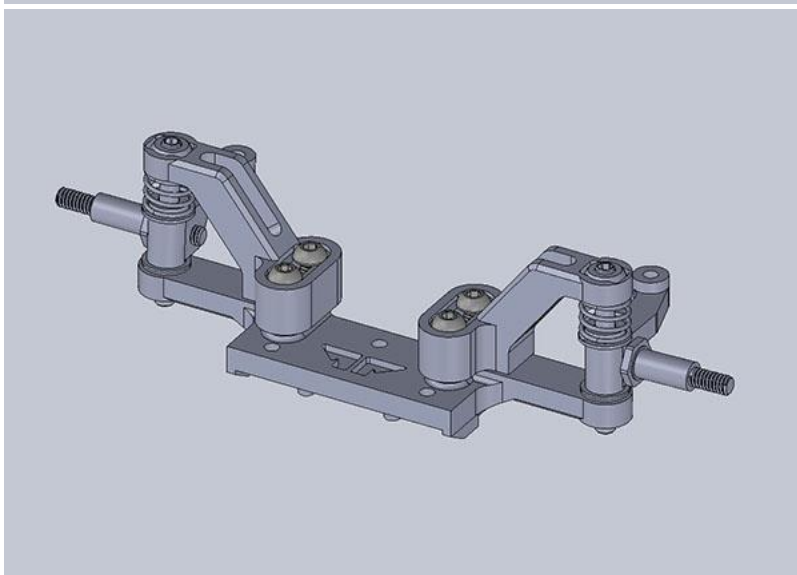
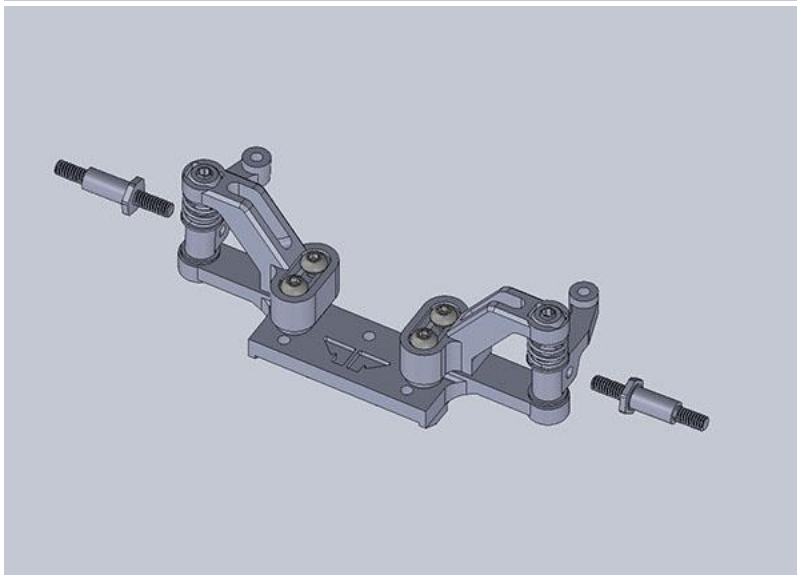
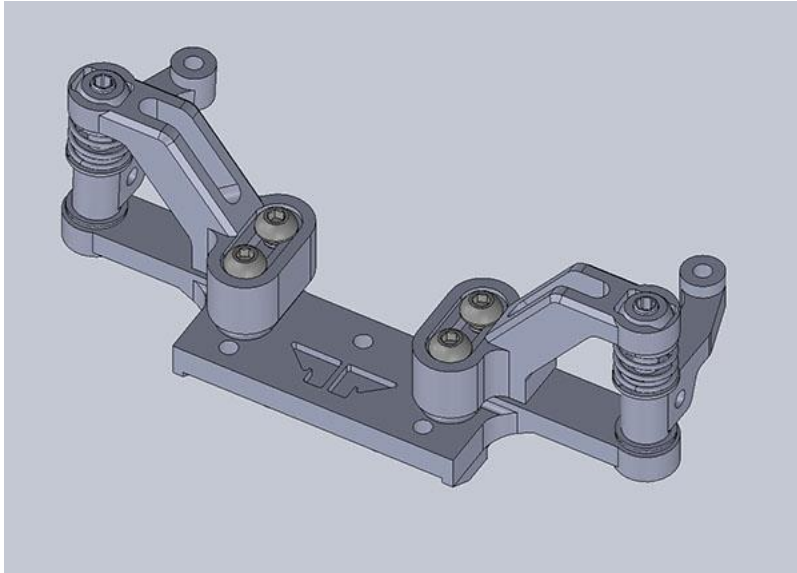
2 degrees makes the car turn in harder and keeps the front flatter. However, this setting provides less middle and exit steering. Less caster also aids in having less traction rolling. Use lower caster in higher traction conditions.

4 degrees makes the car track straighter and have a little more middle and exit steering.



ASSEMBLY INSTRUCTIONS

Once caster is set, install your axles in the knuckles. Always use thread locker here on the axle going into the steering knuckle. Otherwise, when screwing your wheels on and off the axle can become unthreaded instead of the nut.



ASSEMBLY INSTRUCTIONS

To finish the KISS Assembly,
install 2x 3.5mm Ball Studs.

